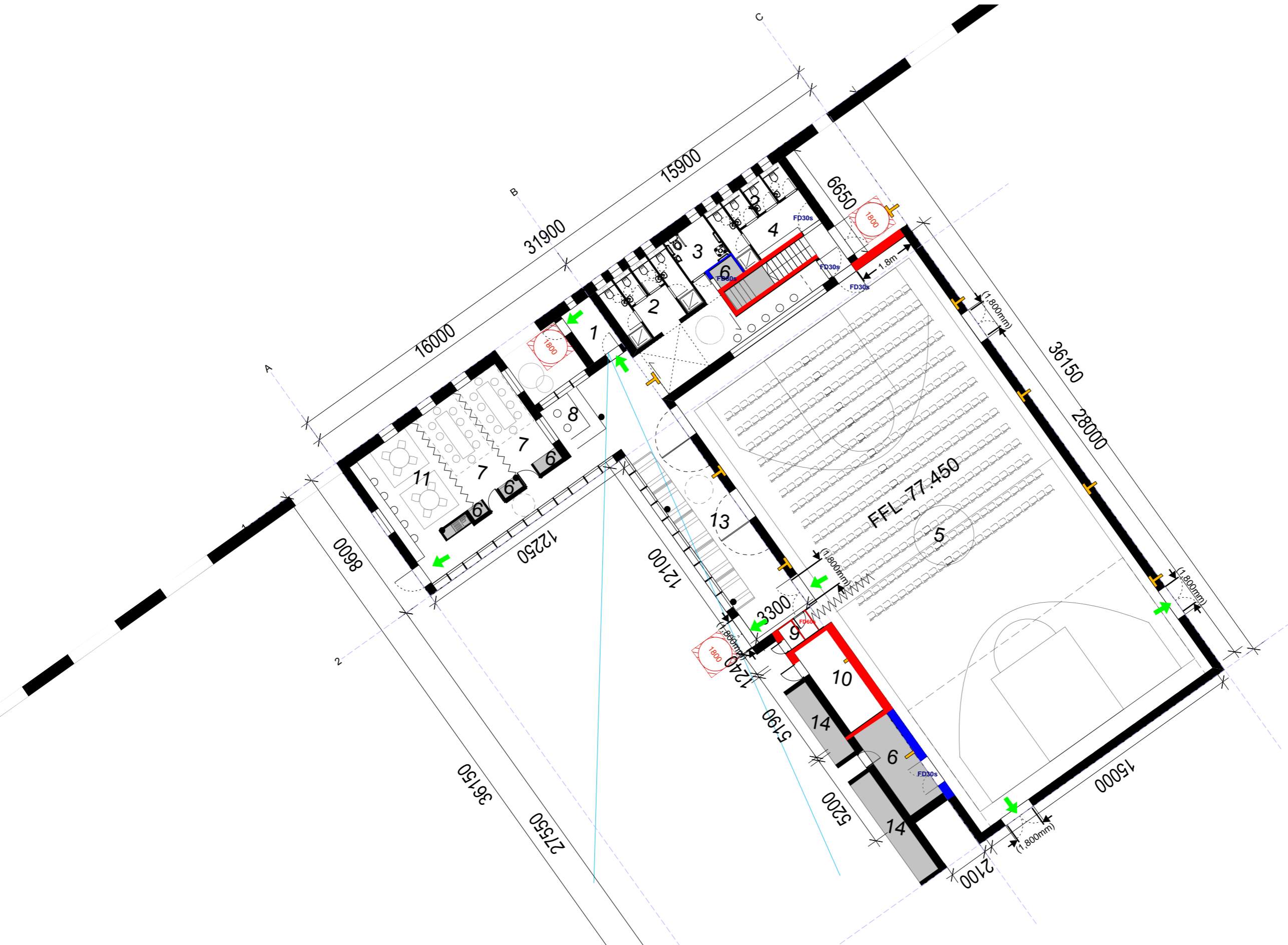


Fire Safety & Access Strategy Legend

- █ Compartment Wall/ Partition achieving 60 minutes fire resistance for load-bearing capacity, integrity and insulation when tested to BS 476: Part 21/22.
- █ Wall/Partition achieving 30 minutes fire resistance for load-bearing capacity, integrity and insulation when tested to BS 476:Part 21/22
- FD60s** 60 minute fire resisting door set when tested to BS 476: Part 22. 'S' denotes smoke seals with a leakage rate of <math>< 3\text{m}^3/\text{hour}</math> at 25Pa.
- FD30s** 30 minute fire resisting door set when tested to BS 476: Part 22. 'S' denotes smoke seals with a leakage rate of <math>< 3\text{m}^3/\text{hour}</math> at 25Pa.
- ➔ Maintained emergency exit sign in accordance with IS 3217:32013 + A1:2017
- 1800 Clear space with minimum dimensions of 1.800mm

LEGEND

1. Lobby
2. Toilets
3. DAC Toilet with shower
4. Changing Room
5. Multi-purpose Hall
6. Storage
7. Meeting Room
8. Reception
9. Electric/Plant Room
10. Plant Room
11. Kitchen/Cafe/Dining
12. Multi-purpose Room
13. Informal meeting area
14. External storage area/zone
15. Green Room (Projection)



01 PROPOSED GROUND PLAN

100

REVISION
revision
revision
revision
revision

NOTES

levels All levels and dimensions to be checked onsite. Any discrepancies to be reported to Cooney Architects. Do not scale off this drawing. Use figured dimensions only.

This drawing is to be read in conjunction with all other relevant Engineering and Architectural drawings and specifications. General structure only. To be cross referenced with all associated Engineers drawings.

copyright This drawing and design is copyright, and may not be reproduced without Cooney Architects permission.

DESIGN TEAM

3

PLANNING PERMISSION DOCUMENT

CooneyArchitects

project title Proposed Community Centre, Killoock, Co. Kildare

client Kildare County Council

drawn by BB/LY

checked by Fc

drawing no. 18002.SK.100

drawing title Proposed ground floor Plan

scale 1:200 @A3
1:100 @A1

date March 2019

